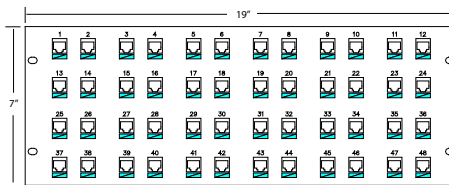
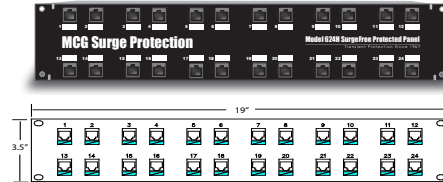
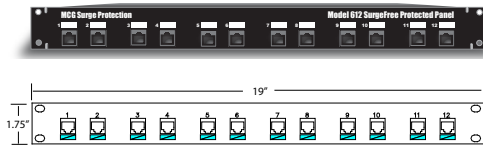


# Data Line Protection

## MODEL

### 612/624/648 Series

**12/24/48 Port Rackmount**  
**110 Punchdown to RJ45**



Transient surge energies from sources such as nearby lightning strikes, inductive load switching, ground loop currents, and electrostatic discharge are clamped by AC protectors into the shared communication ground, resulting in damage to expensive communication hardware. 612/624/648 Series includes: 12, 24, and 48 port, 19" rack mounted protection units that feature 110 punchdown to RJ45 connectors. CAT6 performance. Also available in configurations that offer protection for Telco and ISDN circuits.

## SPECS

Model	Pins Protected	Std. Clamp Voltage	Current	Height
612-C6	All Pins	7.5 volts	100A	1U
612-60V-8W*	All Pins	60 volts	50A	1U
612-240V-4W*	Clr 4 Pins	240 volts	75A	1U
612-PoE-A	All Pins	60 volts	50A	1U
612-PoE-B	All Pins	Pins 1,2,3,6,-7.5V Pins 4,5,7,8-60V	132A 50A	1U
624-C6	All Pins	7.5 volts	100A	2U
624-60V-8W*	All Pins	60 volts	50A	2U
624-PoE-A	All Pins	60 volts	50A	2U
624-PoE-B	All Pins	Pins 1,2,3,6,-7.5V Pins 4,5,7,8-60V	132A 50A	2U
648-C6	All Pins	7.5 volts	100A	4U
648-60V-8W*	All Pins	60 volts	50A	4U
648-PoE-A	All Pins	60 volts	50A	4U
648-PoE-B	All Pins	Pins 1,2,3,6-7.5V Pins 4,5,7,8-60V	132A 50A	4U

Connectors: 110 Block to RJ45 Connectors  
 Response Time: <5ns  
 UL Listing: UL497B Listed unless noted.  
 ROHS Compliant unless noted.  
 Warranty: 20-year warranty



\*Not UL listed or ROHS compliant